

MONTHLY MEMBERSHIP PROGRESS REPORT

LOCATION MINNESOTA

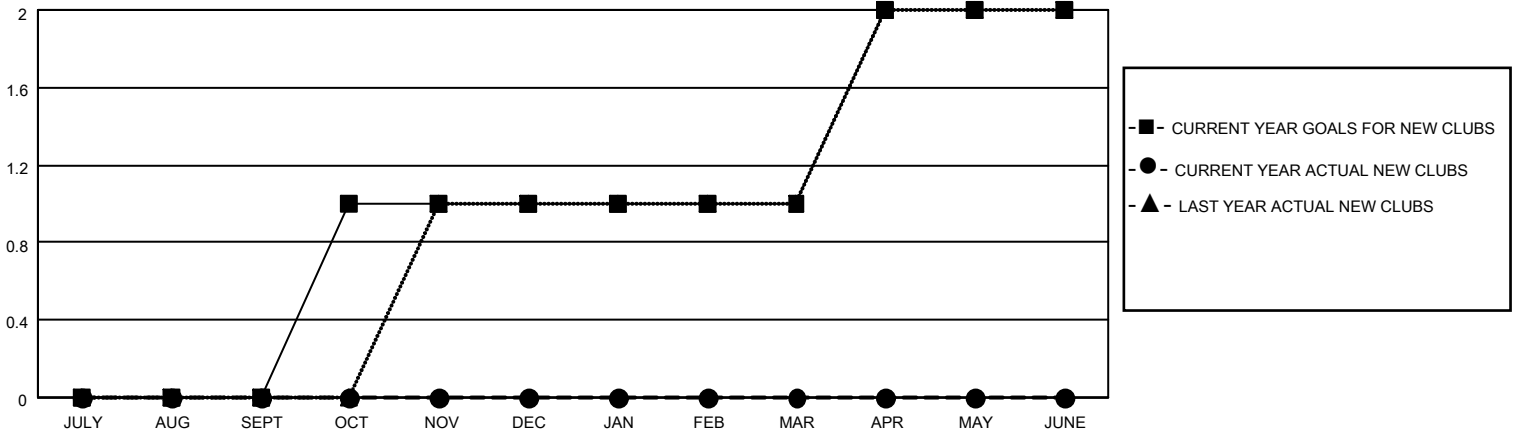
District 5M 9

Results as of: 4/30/2023

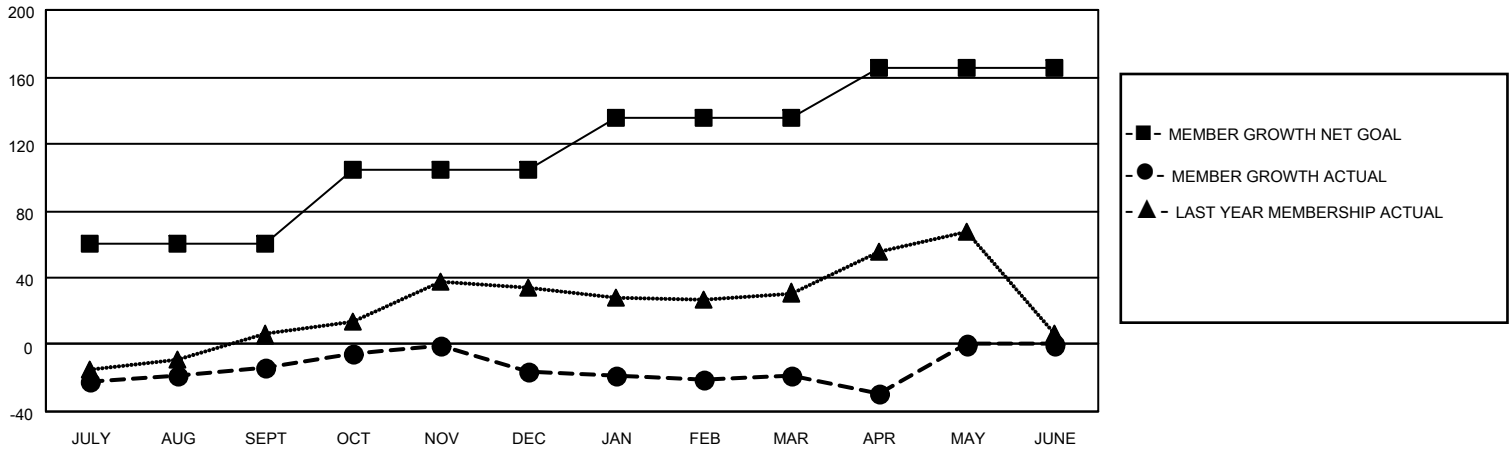
Clubs			
RESULTS FOR 2022-2023			
QUARTER	NEW CLUB GOAL	NEW CLUBS	DROPPED CLUBS
JULY/AUG/SEPT	0	0	0
OCT/NOV/DEC	1	0	0
JAN/FEB/MAR	0	0	0
APR/MAY/JUNE	1	0	0

Members			
RESULTS FOR 2022-2023			
QUARTER	MEMBER GROWTH NET GOAL	MEMBER GROWTH ACTUAL	DROPPED MEMBERS ACTUAL (including transfers)
JULY/AUG/SEPT	60	48	56
OCT/NOV/DEC	45	51	52
JAN/FEB/MAR	30	24	26
APR/MAY/JUNE	30	5	15

GOALS AND ACTUAL NEW CLUBS CUMULATIVE



GOALS AND ACTUAL MEMBERS CUMULATIVE



DROPPED CLUBS: 0

36 CLUBS OF 64 ADDED 1 OR MORE NEW MEMBERS

GENDER DISTRIBUTION

MALE	1,235 (60.72%)
FEMALE	797 (39.18%)
NON BINARY	0 (0.00%)
PREFER NOT TO ANSWER	2 (0.10%)

DROPPED MEMBERS

DECEASED	28
CLUB CANCELLED	0
OTHER	121
TOTAL	149

[CLICK HERE FOR CUMULATIVE MEMBERSHIP DATA](#)

TOTAL FAMILY UNIT MEMBERS	669
FAMILY MEMBERS PAYING HALF DUES	337